



EXAMINATIONS COUNCIL OF ESWATINI
Eswatini Primary Certificate Examination

CANDIDATE
NAME

CENTRE
NUMBER

--	--	--	--

CANDIDATE
NUMBER

--	--	--	--

AGRICULTURE

616/01

Paper 1

For Examination from 2025 - 2027

1 hour 45 mins

READ THESE INSTRUCTIONS FIRST

This paper consists of **two** sections: **Section A and Section B**

Section A consists of 20 multiple choice questions.

Four possible answers are given for each question. Choose the best answer and record your choice in soft pencil in the box provided.

EXAMPLE: 40. How many legs does an insect have?

- A** 2
- B** 4
- C** 6
- D** 8

C

Section B consists of simple response on the question paper.
Answer **all** questions in the spaces provided.

For Examiner's Use	
SECTION A	
SECTION B	
Total marks	

This document consists of **12** printed pages.

SECTION A (20 marks)

1. Which farming system involves the growing of crops for family consumption?
- A cash crop farming
 - B commercial farming
 - C own farming
 - D subsistence farming
-
2. Which soil type contains the three different types of soils?
- A clay soil
 - B loam soil
 - C sandy soil
 - D silty soil
-
3. Which type of soil holds more water?
- A clay soil
 - B loam soil
 - C sandy soil
 - D silty soil
-
4. What is soil structure?
- A is the feeling of the soil
 - B soil that has good soil pore spaces
 - C the mixture of the three types of soils
 - D the way soil particles fit together
-

5. Fig. 5.1 shows a planted vegetable in a garden.



Fig. 5.1

What management activity is demonstrated in Fig. 5.1?

- A fertilizing
- B mulching
- C thinning
- D weeding

6. What is the importance of weeding?

- A to conserves moisture
- B to improve soil structure
- C to increase infiltration rate
- D to reduce competition of nutrients

7. Which plant pest feeds by piercing and sucking sap?

- A diamondback moth
- B caterpillar
- C cutworm
- D thrips

8. What is a common sign of black rot disease in cabbage?

- A leaves have transparent patches
- B leaves have v – shaped black spots
- C leaves have v- shaped brown patches
- D leaves have v - shaped purple spots

9. What are the three common kinds of weeds?

- A parasitic weed, root weeds, invasive weeds
- B parasitic weeds, leafy weeds, invasive weeds
- C parasitic weeds, poisonous weeds, invasive weeds
- D parasitic weeds, invasive weeds, witch weeds

10. Fig. 10.1 shows the structure of a flower

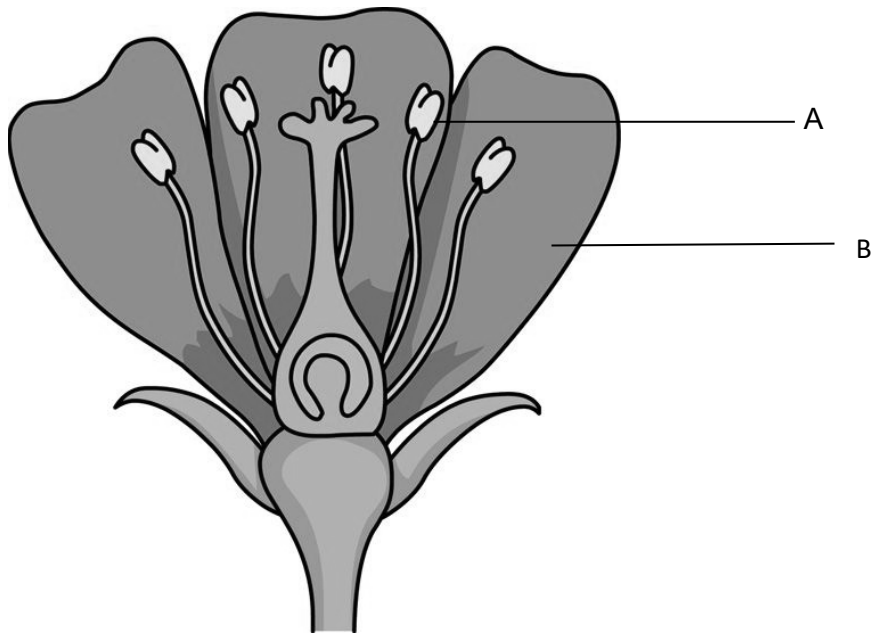


Fig. 10.1

What name is given to the part labelled A?

- A anther
- B filament
- C ovary
- D pistil

11. What is the function of the part labelled B?

- A attracts pollinators to the flower
- B produces pollen grains
- C protects the bud/developing flower
- D receives pollen grains from the anther

12. Which part of the plant is responsible for supporting the branches of a tree?

- A flower
- B leaves
- C root
- D stem

13. What term describes the caring of chicks by a hen

- A brooding
- B growing
- C hatching
- D incubation

14. What equipment provides warmth to chicks?

- A bucket
- B brooder
- C feeder
- D Incubator

15. What is the incubation period for an egg?

- A 7 days
- B 14 days
- C 21 days
- D 28 days

16. Which is an example of chicken vice?

- A cannibalism
- B coccidiosis
- C mereks
- D Newcastle disease

17. What do we call the washing away of the topsoil?

- A soil deposits
- B soil erosion
- C soil structure
- D soil texture

18. Which of the following are agents of soil erosion?

- A water and dust
- B water and gullies
- C water and muddy
- D water and wind

19. Which of the following is a management activity in cattle farming?

- A castration
- B breeding
- C handling
- D rearing

20. Which of the following records is used to record income in a farm?

- A dairy
- B financial record
- C health record
- D reproduction record

SECTION B (80 marks)

1. (a) Outline any **three** benefits of agriculture.

- (i)
- (ii)
- (iii) [3]

(b) Describe any **two** characteristics of modern farming.

- (i)
.....
- (ii)
..... [2]

[5 marks]

2. (a) Outline the **three** development stages of agriculture.

- (i)
- (ii)
- (iii) [3]

(b) State any **two** characteristics of Swazi Nation Land (SNL).

- (i)
.....
- (ii)
..... [2]

[5 marks]

3. (a) What is a soil structure?

.....
..... [1]

(b) Name the **four** characteristics of topsoil.

- (i)
- (ii)
- (iii)
- (iv) [4]

[5 marks]

4. (a) Give any **three** characteristics of a good site for a vegetable garden.

- (i)
- (ii)
- (iii) [3]

(b) Explain how you would prepare a seedbed for sowing carrot seeds.

.....
.....
..... [3]

[6 marks]

5. (a) Explain how you would prevent early blight in tomatoes? Give **two** ways.

- (i)
 - (ii)
- [4]

(b) State any **two** common agents of seed dispersal.

- (i)
- (ii) [2]

[6 marks]

6. (a) Give **one** example of each of the following groups of vegetables.

- (a) Bulb
- (b) Legume
- (c) Fruit
- (d) Leafy
- (e) Root [5]

[5 marks]

7. (a) State the **two** types of compost.

- (i)
- (ii) [2]

(b) Give any **three** materials which can be used when making a compost.

- (i)
- (ii)
- (ii) [3]

[5 marks]

8. Explain how plants make food.

.....

.....

.....

.....

.....

..... [6]

[6 marks]

9. (a) Describe the method of harvesting sweet potatoes.

.....

.....

.....

.....

..... [2]

(b) Outline any **three** modern ways of storing field crops.

(i)

(ii)

(iii) [3]

[5 marks]

10. (a) State any **two** signs that show that dry maize is ready for harvesting.

(i)

(ii) [2]

(b) Outline any **three** stages of land preparation.

(i)

(ii)

(iii) [3]

[5 marks]

11. (a) Describe the importance of the components in a cropping house.

Work area

.....
..... [1]

(b) List the **five** steps followed when growing mushrooms in their order?

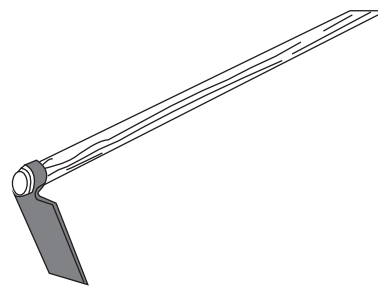
- (i)
- (ii)
- (iii)
- (iv)
- (v) [5]

[6 marks]

12. Fig. 12.1 shows garden tools



(a)



(b)

Fig. 12.1

(a) Name the tool labelled (a).

..... [1]

(b) State **four** uses of the tool labelled (b)?

- (i)
- (ii)
- (iii)
- (iv) [4]

[5 marks]

13. (a) State any **three** safety guidelines to be followed when using garden tools.

- (i)
- (ii)
- (iii) [3]

(b) State any **two** materials that are used for making traditional tools.

- (i)
- (ii) [2]

[5 marks]

14. (a) Explain any **one** advantages of buying broilers at four weeks.

.....

.....

..... [2]

(b) Describe the **two** methods of feeding broilers.

- (i)
-
- (ii)
- [4]

[6 marks]

15. (a) Explain the importance of the following cattle management activities:

(i) Weaning

.....
.....

(ii) Castration

.....
..... [4]

(b) List any **one** common cattle diseases found in Eswatini.

..... [1]

[5 marks]

Permission to reproduce items where third party owned material protected by copyright is included has been sought and cleared where possible. Every reasonable effort has been made by the publisher (ECESWA) to trace copyright holders, but if any items requiring clearance have unwittingly been included, the publisher will be pleased to make amends at the earliest possible opportunity.